

14

**FOURTH AMENDMENT TO THE DECLARATION OF CONDOMINIUM
FOR THE RESERVE AT HERSHEY MEADOWS, A CONDOMINIUM**

THIS FOURTH AMENDMENT TO THE DECLARATION OF CONDOMINIUM FOR THE RESERVE AT HERSHEY MEADOWS, A CONDOMINIUM (the "**Fourth Amendment**") is made as of the 7th day of June, 2005, by the Terraces at Hanover Limited Partnership (the "**Declarant**").

RECITALS

The background of this Fourth Amendment is as follows:

R.1. Pursuant to a Declaration of Condominium of The Reserve at Hershey Meadows, a Condominium dated April 30, 2004 and recorded in the Office of the Recorder of Deeds of Dauphin County, Pennsylvania on April 30, 2004 in Record Book 5505, pages 307 et seq (the "**Declaration**") and accompanying Plats and Plans, Declarant submitted certain property located in South Hanover Township, Dauphin County, Pennsylvania and known as Lots K and M of Phase 6 of the Meadows of Hanover, a Planned Community, to the condominium form of ownership pursuant to the Pennsylvania Uniform Condominium Act, 68 P.S. §§ 3101 – 3414 (the "**Act**"), thereby creating the condominium known as "The Reserve at Hershey Meadows, a Condominium" (the "**Condominium**").

R.2. In the Declaration, Declarant specifically reserved certain other property as Convertible Real Estate (as defined in the Declaration) for the purpose of potentially adding such property to the Condominium.

R.3. Pursuant to a First Amendment to the Declaration of Condominium of the Reserve at Hershey Meadows, a Condominium, dated on or about August 10, 2004 and recorded in the Office of the Recorder of Deeds of Dauphin County, Pennsylvania on August 15, 2004 in Record Book 5637, pages 253 et seq (the "**First Amendment**") and accompanying Plats and Plans, Declarant converted a portion of the Convertible Real Estate consisting of Lot O of Phase 6 of the Meadows of Hanover, a Planned Community to the Condominium.

R.4. Pursuant to a Second Amendment to the Declaration of Condominium of the Reserve at Hershey Meadows, a Condominium, dated on or about August 26, 2004 and recorded in the Office of the Recorder of Deeds of Dauphin County, Pennsylvania on September 8, 2004 in Record Book 5669, pages 481 et seq (the "**Second Amendment**") and accompanying Plats and Plans, Declarant converted a portion of the Convertible Real Estate consisting of Lots D, E and Q of Phase 6 of the Meadows of Hanover, a Planned Community to the Condominium.

R.5. On or about December 15, 2004, Declarant held the First Meeting of the Unit Owners of the Condominium for the purposes of turning over control of the Condominium to the Unit Owners, at which meeting the Unit Owners of the

Condominium (other than the Declarant) elected the Executive Board of the Condominium.

R.6. Pursuant to a Third Amendment to the Declaration of Condominium of the Reserve at Hershey Meadows, a Condominium, dated on or about May 3, 2005 and recorded in the Office of the Recorder of Deeds of Dauphin County, Pennsylvania on May 20, 2005 in Record Book 6004, pages 120 et seq (the "**Third Amendment**"), the Special Declarant Rights and the Declarant Control Period were reinstated until August 10, 2011.

R.7. The Declarant desires by this Fourth Amendment to submit Lots A, B, C, F, G, H, I, J, L, N, and P, which are part of the convertible Real Estate to the terms of the Declaration, as amended, and to Act.

R.8. All capitalized terms used herein which are not defined herein shall have the meanings specified the Declaration or the Act, as applicable.

NOW, THEREFORE, the Declaration, as amended by the First Amendment, the Second Amendment and the Third Amendment, is hereby further amended as follows:

1. The Recitals set forth above are incorporated herein by reference as if set forth in full.

2. The Declarant hereby submits the real estate known as Lots A, B, C, F, G, H, I, J, L, N, and P, as identified on the Declaration Plat for The Reserve (Phase 6) at Hershey Meadows, a Condominium dated April 21, 2005, and the Declaration Plat for the Reserve at Hershey Meadows, a Condominium, prepared by Herbert, Rowland & Grubic, Inc., a true and correct copy of which is attached hereto as Exhibit A and incorporated here by reference (the "**Fourth Amendment Plats and Plans**"), and the Buildings, Units, Common Elements, and Limited Common Elements thereon, to the terms, conditions, covenants, restrictions and easement of the Declaration, as amended by the First Amendment, the Second Amendment and the Third Amendment, and to the Act.

3. The term "Plats and Plans" as defined or identified in the Declaration, as amended, is further amended to include and be supplemented by the Fourth Amendment Plats and Plans.

4. In accordance with Article X, section 1 of the Declaration, the Percentage Interests appurtenant to each Unit shall henceforth be as set forth on Exhibit B attached hereto and incorporated herein by reference.

5. This Fourth Amendment shall be effective at the time of recording in the Dauphin County Recorder of Deeds Office.

6. Except as specifically modified herein, the Declaration as previously amended remains in full force and effect in accordance with its terms.

IN WITNESS WHEREOF, the Declarant has executed this Amendment as of the day and year first above written.

DECLARANT:
TERRACES AT HANOVER LIMITED
PARTNERSHIP

Date: 6/7/05

By: [Signature]
General Partner
Bernard B. Brown (SSW)

COMMONWEALTH OF PENNSYLVANIA :
: SS:
COUNTY OF :

ON THIS, the 7th day of June, 2005, before me, a Notary Public, the undersigned officer, personally appeared Bernard B. Brown, General Partner of the Terraces at Hanover Limited Partnership, who acknowledged herself/himself to be a General Partner and that she/he, as such General Partner, being authorized to do so, executed the foregoing instrument for the purposes therein contained.

IN WITNESS WHEREOF, I hereunto set my hand and official seal.

Penny M. Sheedy
Notary Public

My Commission Expires:

(Seal)

Notarial Seal
Penny M. Sheedy, Notary Public
Lower Paxton Twp., Dauphin County
My Commission Expires Sept. 15, 2005
Member, Pennsylvania Association of Notaries

I hereby CERTIFY that this document is recorded in the Recorder's Office of Dauphin County, Pennsylvania.



James M. Zugay, Esq.
James M. Zugay, Esq.
Recorder of Deeds

RECORDERS OFFICE
COUNTY OF DAUPHIN
PENNSYLVANIA

2005 JUN - 8 P 3:28

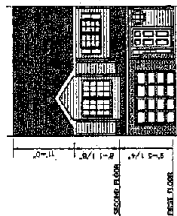
RECEIVED

22298

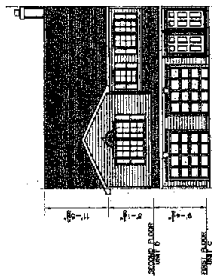
BK6031PG 432

EXHIBIT A
REDUCED COPY OF FOURTH AMENDMENT PLATS AND PLANS

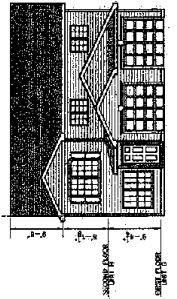
BK6031PG 433



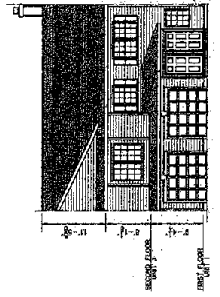
UNIT TYPE "A"
 $1/8" = 1'-0"$
 FRONT ELEVATION



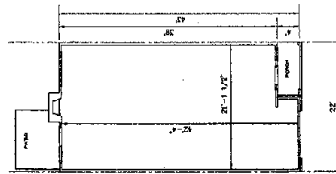
UNIT TYPE "C&D"
 $1/8" = 1'-0"$
 FRONT ELEVATION



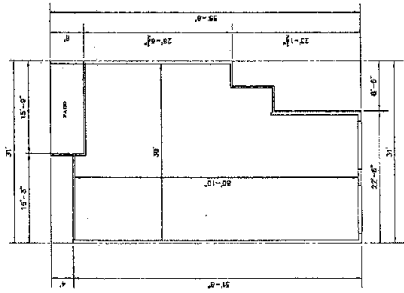
UNIT TYPE "G/H-ALT."
 $1/8" = 1'-0"$
 FRONT ELEVATION



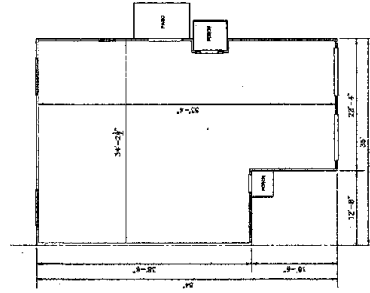
UNIT TYPE "I&J"
 $1/8" = 1'-0"$
 FRONT ELEVATION



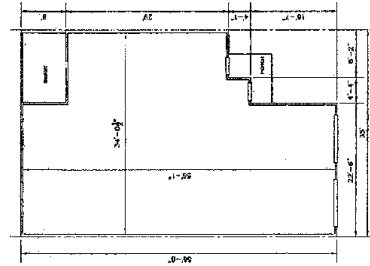
UNIT TYPE "A"
 $1/8" = 1'-0"$
 PLAN



UNIT TYPE "C&D"
 $1/8" = 1'-0"$
 PLAN



UNIT TYPE "G/H-ALT."
 $1/8" = 1'-0"$
 PLAN



UNIT TYPE "I&J"
 $1/8" = 1'-0"$
 PLAN

MEADOWS OF HANOVER DEVELOPMENT, INC.
 225 NORTH PRESIDENTIAL BLVD.
 BALA C'NYWD, PA 19004
 810 817 9642

DECLARATION PLAT
 FOR
 THE RESERVE (PHASE 6)
 AT HERSHEY MEADOWS, A CONDOMINIUM
 SOUTH HANOVER TOWNSHIP, DAUPHIN, PENNSYLVANIA

DATE: 04/21/03
 SCALE: 1/8" = 1'-0"
 CHECKED: MK
 DRAWING NO.: 2 OF 2
 SHEET NO.: 2

**EXHIBIT B
PERCENTAGE INTERESTS**

Unit No.	% Interest
1	.595%
2	.595%
3	.595%
4	.595%
5	.595%
6	.595%
7	.595%
8	.595%
9	.595%
10	.595%
11	.595%
12	.595%
13	.595%
14	.595%
15	.595%
16	.595%
17	.595%
18	.595%
19	.595%
20	.595%
21	.595%
22	.595%
23	.595%
24	.595%
25	.595%
26	.595%
27	.595%
28	.595%
29	.595%
30	.595%
31	.595%
32	.595%
33	.595%
34	.595%
35	.595%
36	.595%
37	.595%
38	.595%
39	.595%
40	.595%
41	.595%
42	.595%
43	.595%

Unit No.	% Interest
44	.595%
45	.595%
46	.595%
47	.595%
48	.595%
49	.595%
50	.595%
51	.595%
52	.595%
53	.595%
54	.595%
55	.595%
56	.595%
57	.595%
58	.595%
59	.595%
60	.595%
61	.595%
62	.595%
63	.595%
64	.595%
65	.595%
66	.595%
67	.595%
68	.595%
69	.595%
70	.595%
71	.595%
72	.595%
73	.595%
74	.595%
75	.595%
76	.595%
77	.595%
78	.595%
79	.595%
80	.595%
81	.595%
82	.595%
83	.595%
84	.595%
85	.595%
86	.595%

Unit No.	% Interest
87	.595%
88	.595%
89	.595%
90	.595%
91	.595%
92	.595%
93	.595%
94	.595%
95	.595%
96	.595%
97	.595%
98	.595%
99	.595%
100	.595%
101	.595%
102	.595%
103	.595%
104	.595%
105	.595%
106	.595%
107	.595%
108	.595%
109	.595%
110	.595%
111	.595%
112	.595%
113	.595%
114	.595%
115	.595%
116	.595%
117	.595%
118	.595%
119	.595%
120	.595%
121	.595%
122	.595%
123	.595%
124	.595%
125	.595%
126	.595%
127	.595%
128	.595%
129	.595%

Unit No.	% Interest
130	.595%
131	.595%
132	.595%
133	.595%
134	.595%
135	.595%
136	.595%
137	.595%
138	.595%
139	.595%
140	.595%
141	.595%
142	.595%
143	.595%
144	.595%
145	.595%
146	.595%
147	.595%
148	.595%
149	.595%
150	.595%
151	.595%
152	.595%
153	.595%
154	.595%
155	.595%
156	.595%
157	.595%
158	.595%
159	.595%
160	.595%
161	.595%
162	.595%
163	.595%
164	.595%
165	.595%
166	.595%
167	.595%
168	.595%

**SUGGESTED LEGAL DESCRIPTION
FOR
THE RESERVE (PHASE 6)
AT HERSHEY MEADOWS
LOT A**

All that certain tract of land situate in South Hanover Township, Dauphin County, Pennsylvania, located on the east side of Goldfinch Lane, said tract being Lot A as shown on the "Declaration Plat For The Reserve (Phase 6) At Hershey Meadows, A Condominium" prepared by Herbert, Rowland and Grubic, Inc. dated April 21, 2005, more fully bounded and described as follows:

BEGINNING on the eastern Dedicated Right-Of-Way Line of Goldfinch Lane and, the dividing line between Lots A & G as shown on the "Declaration Plat For The Reserve (Phase 6) At Hershey Meadows, A Condominium"; thence along the dividing line between Lots A & G the following three (3) courses and distances, (1) South 25 degrees 56 minutes 02 seconds East 132.54 feet, (2) South 30 degrees 21 minutes 44 seconds East 102.23 feet, (3) South 32 degrees 14 minutes 55 seconds East 132.31 feet to the intersection of Lots A, C, G, & H; thence along the dividing line between Lots A & C South 34 degrees 44 minutes 47 seconds West 87.98 feet to Cardinal Lane (a variable width utility & access easement); thence along Cardinal Lane (a variable width utility & access easement) the following eight (8) courses and distances, (1) North 02 degrees 52 minutes 23 seconds West 26.87 feet, (2) South 87 degrees 07 minutes 37 seconds West 49.70 feet, (3) by a curve to the right having a radius of 3.33 feet, an arc length of 3.31 feet and a chord of North 64 degrees 22 minutes 11 seconds West 3.18 feet, (4) by a curve to the right having a radius of 184.33 feet, an arc length of 21.74 feet and a chord of North 32 degrees 29 minutes 14 seconds West 21.73 feet, (5) North 29 degrees 06 minutes 28 seconds West 167.68 feet, (6) by a curve to the left having a radius of 165.67 feet, an arc length of 55.14 feet and a chord of North 38 degrees 38 minutes 31 seconds West 54.88 feet, (7) North 48 degrees 10 minutes 34 seconds West 37.75 feet, (8) by a curve to the right having a radius of 23.33 feet, an arc length of 11.74 feet and a chord of North 33 degrees 45 minutes 36 seconds West 11.62 feet to the eastern Dedicated Right-Of-Way Line of Goldfinch Lane; thence along the eastern Dedicated Right-Of-Way Line of Goldfinch Lane, by a curve to the left having a radius of 770.00 feet, an arc length of 150.53 feet and a chord of North 34 degrees 50 minutes 32 seconds East 150.29 feet, being the place of BEGINNING.

Containing 0.8941 acres.

X:\01\0175\0175009\009\Legal Desc\Lot A.doc

BK6031 PG 437

SUGGESTED LEGAL DESCRIPTION

FOR

THE RESERVE (PHASE 6)

AT HERSHEY MEADOWS

LOT B

All that certain tract of land situate in South Hanover Township, Dauphin County, Pennsylvania, located on the east side of Goldfinch Lane, said tract being Lot B as shown on the "Declaration Plat For The Reserve (Phase 6) At Hershey Meadows, A Condominium" prepared by Herbert, Rowland and Grubic, Inc. dated April 21, 2005, more fully bounded and described as follows:

BEGINNING on the northern Dedicated Right-Of-Way Line of Hershey Road (S.R. 0039) and eastern Dedicated Right-Of-Way Line of Goldfinch Lane at the southwestern corner of Lot B as shown on the "Declaration Plat For The Reserve (Phase 6) At Hershey Meadows, A Condominium", thence along eastern Dedicated Right-Of-Way Line of Goldfinch Lane the following three (3) courses and distances, (1) by a curve to the right having a radius of 52.00 feet, an arc length of 81.68 feet and a chord of North 00 degrees 24 minutes 15 seconds East 73.54 feet, (2) North 45 degrees 24 minutes 15 seconds East 86.90 feet, (3) by a curve to the left having a radius of 770.00 feet, an arc length of 26.64 feet and a chord of North 44 degrees 24 minutes 47 seconds East 26.64 feet to Cardinal Lane (a variable width utility & access easement); thence along Cardinal Lane (a variable width utility & access easement) the following eight (8) courses and distances, (1) by a curve to the right having a radius of 23.33 feet, an arc length of 16.81 feet and a chord of South 68 degrees 49 minutes 24 seconds East 16.45 feet, (2) South 48 degrees 10 minutes 34 seconds East 33.44 feet, (3) by a curve to the right having a radius of 134.29 feet, an arc length of 44.95 feet and a chord of South 38 degrees 41 minutes 34 seconds East 44.74 feet, (4) South 29 degrees 06 minutes 28 seconds East 167.68 feet, (5) by a curve to the left having a radius of 215.67 feet, an arc length of 41.56 feet and a chord of South 34 degrees 37 minutes 44 seconds East 41.50 feet, (6) by a curve to the right having a radius of 3.33 feet, an arc length of 5.15 feet and a chord of South 04 degrees 11 minutes 46 seconds West 4.66 feet, (7) South 48 degrees 32 minutes 31 seconds West 16.72 feet, (8) by a curve to the left having a radius of 235.67 feet, an arc length of 80.66 feet and a chord of South 50 degrees 51 minutes 24 seconds East 80.26 feet to the dividing line between Lots B & D; thence along the dividing line between Lots B & D South 16 degrees 53 minutes 33 seconds West 92.60 feet to the northern Dedicated Right-Of-Way Line of Hershey Road (S.R. 0039); thence along the northern Dedicated Right-Of-Way Line of Hershey Road South 72 degrees 52 minutes 43 seconds West 28.18 feet; thence continuing along the same North 44 degrees 35 minutes 45 seconds West 356.02 feet, being the place of BEGINNING.

Containing 1.2650 acres.

X:\01\0175\0175009\009\Legal Desc\Lot B.doc

BK6031PG 438

**SUGGESTED LEGAL DESCRIPTION
FOR
THE RESERVE (PHASE 6)
AT HERSHEY MEADOWS
LOT C**

All that certain tract of land situate in South Hanover Township, Dauphin County, Pennsylvania, located on the north side of Cardinal Lane, said tract being Lot C as shown on the "Declaration Plat For The Reserve (Phase 6) At Hershey Meadows, A Condominium" prepared by Herbert, Rowland and Grubic, Inc. dated April 21, 2005, more fully bounded and described as follows:

BEGINNING on Cardinal Lane (a variable width utility & access easement) and the dividing line between Lots C & P as shown on the "Declaration Plat For The Reserve (Phase 6) At Hershey Meadows, A Condominium"; thence along Cardinal Lane (a variable width utility & access easement) the following nine (9) courses and distances, (1) by a curve to the right having a radius of 464.33 feet, an arc length of 11.04 feet and a chord of South 86 degrees 06 minutes 50 seconds West 11.04 feet, (2) South 03 degrees 24 minutes 39 seconds East 16.65 feet, (3) by a curve to the right having a radius of 3.33 feet, an arc length of 5.27 feet and a chord of South 41 degrees 53 minutes 13 seconds West 4.73 feet, (4) by a curve to the right having a radius of 484.33 feet, an arc length of 27.92 feet and a chord of South 88 degrees 50 minutes 10 seconds West 27.91 feet, (5) North 89 degrees 30 minutes 45 seconds West 147.61 feet, (6) by a curve to the right having a radius of 184.33 feet, an arc length of 75.27 feet and a chord of North 77 degrees 48 minutes 53 seconds West 74.75 feet, (7) by a curve to the right having a radius of 3.33 feet, an arc length of 5.32 feet and a chord of North 20 degrees 19 minutes 31 seconds West 4.77 feet, (8) North 25 degrees 27 minutes 58 seconds East 16.61 feet, (9) by a curve to the right having a radius of 164.33 feet, an arc length of 30.57 feet and a chord of North 59 degrees 47 minutes 14 seconds West 30.52 feet to the dividing line between Lots C & A; thence along the dividing line between Lots C & A North 34 degrees 44 minutes 47 seconds East 87.98 feet to the intersection of Lots A, C, G, & H; thence along the dividing line between Lots C & H South 89 degrees 27 minutes 45 seconds East 225.23 feet to the intersection of Lots C, H, & P; thence along the dividing line between Lots C & P South 04 degrees 08 minutes 52 seconds East 100.85 feet, being the place of BEGINNING.

Containing 0.7092 acres.

**SUGGESTED LEGAL DESCRIPTION
FOR
THE RESERVE (PHASE 6)
AT HERSHEY MEADOWS
LOT F**

All that certain tract of land situate in South Hanover Township, Dauphin County, Pennsylvania, located on the north side of Oriole Court, said tract being Lot F as shown on the "Declaration Plat For The Reserve (Phase 6) At Hershey Meadows, A Condominium" prepared by Herbert, Rowland and Grubic, Inc. dated April 21, 2005, more fully bounded and described as follows:

BEGINNING on Oriole Court (a variable width utility & access easement) and the dividing line between Lots F & N as shown on the "Declaration Plat For The Reserve (Phase 6) At Hershey Meadows, A Condominium"; thence along Oriole Court (a variable width utility & access easement) the following six (6) courses and distances, (1) North 52 degrees 57 minutes 23 seconds West 26.97 feet, (2) South 37 degrees 02 minutes 37 seconds West 40.60 feet, (3) by a curve to the right having a radius of 3.33 feet, an arc length of 3.88 feet and a chord of South 70 degrees 27 minutes 28 seconds West 3.67 feet, (4) by a curve to the right having a radius of 134.33 feet, an arc length of 126.65 feet and a chord of North 49 degrees 07 minutes 05 seconds West 122.01 feet, (5) North 22 degrees 06 minutes 28 seconds West 56.75 feet, (6) by a curve to the left having a radius of 215.67 feet, an arc length of 82.45 feet and a chord of North 33 degrees 03 minutes 33 seconds West 81.94 feet to the dividing line between Lots F & Convertible Real Estate as shown on the "Declaration Plat For The Reserve (Phase 6) At Hershey Meadows, A Condominium"; thence along the dividing line between Lots F & Convertible Real Estate North 45 degrees 59 minutes 22 seconds East 95.27 feet; thence continuing along the same North 73 degrees 53 minutes 32 seconds East 74.46 feet to the intersection of Lots F, L, & Convertible Real Estate; thence along the dividing line between Lots F & L South 16 degrees 06 minutes 28 seconds East 98.45 feet to the intersection of Lots F, L, & N; thence along the dividing line between Lots F & N South 12 degrees 55 minutes 16 seconds East 180.57 feet, being the place of BEGINNING.

Containing 0.7656 acres.

SUGGESTED LEGAL DESCRIPTION
FOR
THE RESERVE (PHASE 6)
AT HERSHEY MEADOWS
LOT G

All that certain tract of land situate in South Hanover Township, Dauphin County, Pennsylvania, located on the south side of Oriole Court, said tract being Lot G as shown on the "Declaration Plat For The Reserve (Phase 6) At Hershey Meadows, A Condominium" prepared by Herbert, Rowland and Grubic, Inc. dated April 21, 2005, more fully bounded and described as follows:

BEGINNING on the eastern Dedicated Right-Of-Way Line of Goldfinch Lane and, the dividing line between Lots A & G as shown on the "Declaration Plat For The Reserve (Phase 6) At Hershey Meadows, A Condominium"; thence along the eastern Dedicated Right-Of-Way Line of Goldfinch Lane, by a curve to the left having a radius of 770.00 feet, an arc length of 73.66 feet and a chord of North 26 degrees 30 minutes 05 seconds East 73.63 feet to Oriole Court (a variable width utility & access easement); thence along Oriole Court (a variable width utility & access easement) the following four (4) courses and distances, (1) by a curve to the right having a radius of 23.33 feet, an arc length of 11.96 feet and a chord of South 81 degrees 45 minutes 55 seconds East 11.83 feet, (2) by a curve to the right having a radius of 184.33 feet, an arc length of 144.68 feet and a chord of South 44 degrees 35 minutes 35 seconds East 140.99 feet, (3) South 22 degrees 06 minutes 28 seconds East 56.75 feet, (4) by a curve to the left having a radius of 165.67 feet, an arc length of 93.84 feet and a chord of South 38 degrees 20 minutes 06 seconds East 92.59 feet to the dividing line between Lots G & H; thence along the dividing line between Lots G & H South 35 degrees 26 minutes 17 seconds West 4.33 feet; thence continuing along the same South 14 degrees 23 minutes 10 seconds West 159.36 feet to the intersection of Lots A, C, G, & H; thence along the dividing line between Lots A & G the following three (3) courses and distances, (1) North 32 degrees 14 minutes 55 seconds West 132.31 feet, (2) North 30 degrees 21 minutes 44 seconds West 102.23 feet, (3) North 25 degrees 56 minutes 02 seconds West 132.54 feet, being the place of BEGINNING.

Containing 0.8281 acres.

X:\01\0175\0175009\009\Legal Desc\Lot G.doc

**SUGGESTED LEGAL DESCRIPTION
FOR
THE RESERVE (PHASE 6)
AT HERSHEY MEADOWS
LOT H**

All that certain tract of land situate in South Hanover Township, Dauphin County, Pennsylvania, located on the south side of Oriole Court, said tract being Lot H as shown on the "Declaration Plat For The Reserve (Phase 6) At Hershey Meadows, A Condominium" prepared by Herbert, Rowland and Grubic, Inc. dated April 21, 2005, more fully bounded and described as follows:

BEGINNING on Oriole Court (a variable width utility & access easement) and the dividing line between Lots G & H as shown on the "Declaration Plat For The Reserve (Phase 6) At Hershey Meadows, A Condominium"; thence along Oriole Court (a variable width utility & access easement) by a curve to the left having a radius of 165.67 feet, an arc length of 149.04 feet and a chord of South 80 degrees 20 minutes 06 seconds East 144.07 feet; thence continuing along the same North 73 degrees 53 minutes 32 seconds East 1.80 feet to the dividing line between Lots H & P; thence along the dividing line between Lots H & P South 16 degrees 06 minutes 28 seconds East 141.88 feet to the intersection of Lots C, H, & P; thence along the dividing line between Lots C & H North 89 degrees 27 minutes 45 seconds West 225.23 feet to the intersection of Lots A, C, G, & H; thence along the dividing line between Lots G & H North 14 degrees 23 minutes 10 seconds East 159.36 feet; thence continuing along the same North 35 degrees 26 minutes 17 seconds East 4.33 feet, being the place of BEGINNING.

Containing 0.5882 acres.

X:\010175\0175009\009\Legal Desc\Lot H.doc

8K6031PG 442

**SUGGESTED LEGAL DESCRIPTION
FOR
THE RESERVE (PHASE 6)
AT HERSHEY MEADOWS
LOT I**

All that certain tract of land situate in South Hanover Township, Dauphin County, Pennsylvania, located on the north side of Sparrow Road, said tract being Lot I as shown on the "Declaration Plat For The Reserve (Phase 6) At Hershey Meadows, A Condominium" prepared by Herbert, Rowland and Grubic, Inc. dated April 21, 2005, more fully bounded and described as follows:

BEGINNING on the eastern Dedicated Right-Of-Way Line of Goldfinch Lane and, the north side of Sparrow Road (a variable width utility & access easement); thence along the eastern Dedicated Right-Of-Way Line of Goldfinch Lane, by a curve to the left having a radius of 770.00 feet, an arc length of 20.29 feet and a chord of North 01 degrees 16 minutes 29 seconds West 20.29 feet; thence continuing along the same by a curve to the left having a radius of 770.00 feet, an arc length of 96.38 feet and a chord of North 05 degrees 36 minutes 55 seconds West 96.31 feet to the dividing line between Lots I & and lands now or formerly of Meadows of Hanover Development, Inc. as shown on the "Declaration Plat For The Reserve (Phase 6) At Hershey Meadows, A Condominium"; thence along the dividing line between Lots I & and lands now or formerly of Meadows of Hanover Development, Inc North 81 degrees 53 minutes 32 seconds East 385.34 feet; thence continuing along the same South 16 degrees 06 minutes 28 seconds East 108.84 feet to the dividing line between Lots I & K; thence along the dividing line between Lots I & K South 73 degrees 53 minutes 32 seconds West 91.68 feet; thence continuing along the same South 43 degrees 52 minutes 14 seconds West 116.49 feet to the north side of Sparrow Road (a variable width utility & access easement); thence along the north side of Sparrow Road (a variable width utility & access easement) the following three (3) courses and distances, (1) by a curve to the left having a radius of 165.67 feet, an arc length of 113.05 feet and a chord of North 69 degrees 35 minutes 20 seconds West 110.87 feet, (2) North 89 degrees 08 minutes 19 seconds West 117.89 feet, (3) by a curve to the right having a radius of 23.33 feet, an arc length of 11.74 feet and a chord of North 74 degrees 43 minutes 22 seconds West 11.62 feet, being the place of BEGINNING.

Containing 1.2677 acres.

X:\01\0175\0175009\009\Legal Desc\Lot I.doc

SUGGESTED LEGAL DESCRIPTION

FOR

THE RESERVE (PHASE 6)

AT HERSHEY MEADOWS

LOT J

All that certain tract of land situate in South Hanover Township, Dauphin County, Pennsylvania, located on the south side of Sparrow Road, said tract being Lot J as shown on the "Declaration Plat For The Reserve (Phase 6) At Hershey Meadows, A Condominium" prepared by Herbert, Rowland and Grubic, Inc. dated April 21, 2005, more fully bounded and described as follows:

BEGINNING on the eastern Dedicated Right-Of-Way Line of Goldfinch Lane and, the south side of Sparrow Road (a variable width utility & access easement); thence along the south side of Sparrow Road (a variable width utility & access easement) the following six (6) courses and distances, (1) by a curve to the right having a radius of 23.33 feet, an arc length of 11.74 feet and a chord of North 76 degrees 26 minutes 44 seconds East 11.62 feet, (2) South 89 degrees 08 minutes 19 seconds East 117.89 feet, (3) by a curve to the right having a radius of 134.33 feet, an arc length of 61.06 feet and a chord of South 76 degrees 06 minutes 57 seconds East 60.54 feet, (4) by a curve to the right having a radius of 3.33 feet, an arc length of 5.36 feet and a chord of South 16 degrees 59 minutes 58 seconds East 4.80 feet, (5) South 29 degrees 05 minutes 39 seconds West 16.59 feet, (6) by a curve to the right having a radius of 114.33 feet, an arc length of 40.40 feet and a chord of South 51 degrees 37 minutes 12 seconds East 40.19 feet to the dividing line between Lots J & L; thence along the dividing line between Lots J & L South 41 degrees 20 minutes 18 seconds West 100.06 feet to the intersection of Lots J, L, & Convertible Real Estate as shown on the "Declaration Plat For The Reserve (Phase 6) At Hershey Meadows, A Condominium"; thence along the dividing line between Lots J & Convertible Real Estate North 79 degrees 41 minutes 25 seconds West 128.67 feet; thence continuing along the same North 79 degrees 57 minutes 19 seconds West 31.80 feet to the eastern Dedicated Right-Of-Way Line of Goldfinch Lane; thence along the eastern Dedicated Right-Of-Way Line of Goldfinch Lane by a curve to the left having a radius of 770.00 feet, an arc length of 104.85 feet and a chord of North 06 degrees 08 minutes 38 seconds East 104.77 feet, being the place of BEGINNING.

Containing 0.5302 acres.

**SUGGESTED LEGAL DESCRIPTION
FOR
THE RESERVE (PHASE 6)
AT HERSHEY MEADOWS
LOT L**

All that certain tract of land situate in South Hanover Township, Dauphin County, Pennsylvania, located on the west side of Sparrow Road, said tract being Lot L as shown on the "Declaration Plat For The Reserve (Phase 6) At Hershey Meadows, A Condominium" prepared by Herbert, Rowland and Grubic, Inc. dated April 21, 2005, more fully bounded and described as follows:

BEGINNING on the west side of Sparrow Road (a variable width utility & access easement) and the dividing line between Lots J & L; as shown on the "Declaration Plat For The Reserve (Phase 6) At Hershey Meadows, A Condominium"; thence along the west side of Sparrow Road (a variable width utility & access easement) the following five (5) courses and distances, (1) South 04 degrees 13 minutes 12 seconds West 26.97 feet, (2) South 85 degrees 46 minutes 48 seconds East 40.61 feet, (3) by a curve to the right having a radius of 3.33 feet, an arc length of 3.88 feet and a chord of South 52 degrees 22 minutes 00 seconds East 3.67 feet, (4)) by a curve to the right having a radius of 134.33 feet, an arc length of 6.67 feet and a chord of South 17 degrees 31 minutes 50 seconds East 6.67 feet, (5) South 16 degrees 06 minutes 28 seconds East 188.77 feet to the dividing line between Lots L & N; thence along the dividing line between Lots L & N South 73 degrees 53 minutes 32 seconds West 115.39 feet to the intersection of Lots F, L, & N; thence along the dividing line between Lots F & L North 16 degrees 06 minutes 28 seconds West 98.45 feet to the intersection of Lots F, L, & Convertible Real Estate; thence along the dividing line between, L, & Convertible Real Estate North 16 degrees 06 minutes 28 seconds West 85.50 feet to the intersection of Lots J, L, & Convertible Real Estate; thence along the dividing line between, J, & L North 41 degrees 20 minutes 18 seconds East 100.06 feet, being the place of BEGINNING.

Containing 0.5500 acres.

X:\01\0175\0175009\009\Legal Desc\Lot L.doc

**SUGGESTED LEGAL DESCRIPTION
FOR
THE RESERVE (PHASE 6)
AT HERSHEY MEADOWS
LOT N**

All that certain tract of land situate in South Hanover Township, Dauphin County, Pennsylvania, located on the west side of Sparrow Road, said tract being Lot N as shown on the "Declaration Plat For The Reserve (Phase 6) At Hershey Meadows, A Condominium" prepared by Herbert, Rowland and Grubic, Inc. dated April 21, 2005, more fully bounded and described as follows:

BEGINNING on the west side of Sparrow Road (a variable width utility & access easement) and the dividing line between Lots L & N; as shown on the "Declaration Plat For The Reserve (Phase 6) At Hershey Meadows, A Condominium"; thence along the west side of Sparrow Road (a variable width utility & access easement) South 16 degrees 06 minutes 28 seconds East 177.92 feet to the north side of Oriole Court (a variable width utility & access easement); thence along north side of Oriole Court (a variable width utility & access easement) the following five (5) courses and distances, (1) by a curve to the right having a radius of 23.33 feet, an arc length of 36.65 feet and a chord of South 28 degrees 53 minutes 32 seconds West 32.99 feet, (2) South 73 degrees 53 minutes 32 seconds West 77.41 feet, (3) by a curve to the right having a radius of 3.33 feet, an arc length of 5.09 feet and a chord of North 62 degrees 18 minutes 44 seconds West 4.61 feet, (4) North 18 degrees 30 minutes 59 seconds West 16.97 feet, (5) by a curve to the right having a radius of 114.33 feet, an arc length of 20.69 feet and a chord of South 76 degrees 08 minutes 41 seconds West 20.66 feet, to the dividing line between Lots F & N; thence along the dividing line between Lots F & N North 12 degrees 55 minutes 16 seconds West 180.57 feet to the intersection of Lots F, L, & N; thence along the dividing line between, L, & N North 73 degrees 53 minutes 32 seconds East 115.39 feet, being the place of BEGINNING.

Containing 0.5462 acres.

X:\01\0175\0175009\009\Legal Desc\Lot N.doc

BK6031PG 446

**SUGGESTED LEGAL DESCRIPTION
FOR
THE RESERVE (PHASE 6)
AT HERSHEY MEADOWS
LOT P**

All that certain tract of land situate in South Hanover Township, Dauphin County, Pennsylvania, located on the south side of Oriole Court, said tract being Lot P as shown on the "Declaration Plat For The Reserve (Phase 6) At Hershey Meadows, A Condominium" prepared by Herbert, Rowland and Grubic, Inc. dated April 21, 2005, more fully bounded and described as follows:

BEGINNING on the south side of Oriole Court (a variable width utility & access easement) and the dividing line between Lots H & P; as shown on the "Declaration Plat For The Reserve (Phase 6) At Hershey Meadows, A Condominium"; thence along the south side of Oriole Court (a variable width utility & access easement) North 73 degrees 53 minutes 32 seconds East 85.50 feet; thence continuing along the same by a curve to the right having a radius of 23.33 feet, an arc length of 36.65 feet and a chord of South 61 degrees 06 minutes 28 seconds East 32.99 feet to the south side of Sparrow Road (a variable width utility & access easement); thence along west side of Sparrow Road (a variable width utility & access easement) South 16 degrees 06 minutes 28 seconds East 223.28 feet to the north side of Cardinal Lane (a variable width utility & access easement); thence along north side of Cardinal Lane (a variable width utility & access easement) the following six (6) courses and distances, (1) by a curve to the right having a radius of 23.33 feet, an arc length of 36.65 feet and a chord of South 28 degrees 53 minutes 32 seconds West 32.99 feet, (2) South 73 degrees 53 minutes 32 seconds West 13.51 feet, (3) by a curve to the right having a radius of 484.33 feet, an arc length of 46.56 feet and a chord of South 76 degrees 38 minutes 46 seconds West 46.54 feet, (4) by a curve to the right having a radius of 3.33 feet, an arc length of 3.31 feet and a chord of North 72 degrees 07 minutes 34 seconds West 3.18 feet, (5) North 43 degrees 39 minutes 08 seconds West 42.74 feet, (6) South 46 degrees 20 minutes 52 seconds West 27.08 feet to the dividing line between Lots C & P; thence along the dividing line between Lots C & P North 04 degrees 08 minutes 52 seconds West 100.85 feet to the intersection of Lots C, H, & P; thence along the dividing line between Lots H & P North 16 degrees 06 minutes 28 seconds West 141.88 feet, being the place of BEGINNING.

Containing 0.6758 acres.

XA0101750175009009\Legal Desc\Lot P.doc

BK6031PG 447